

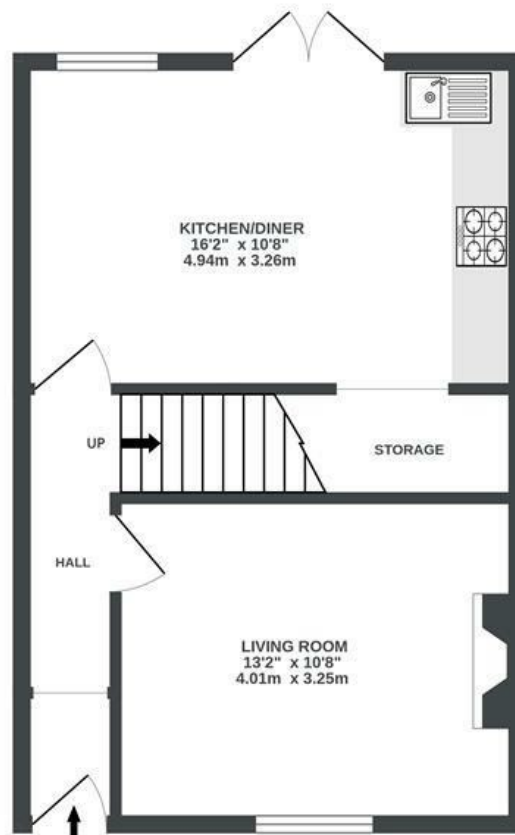
Montgomery Street

VICTORIA PARK

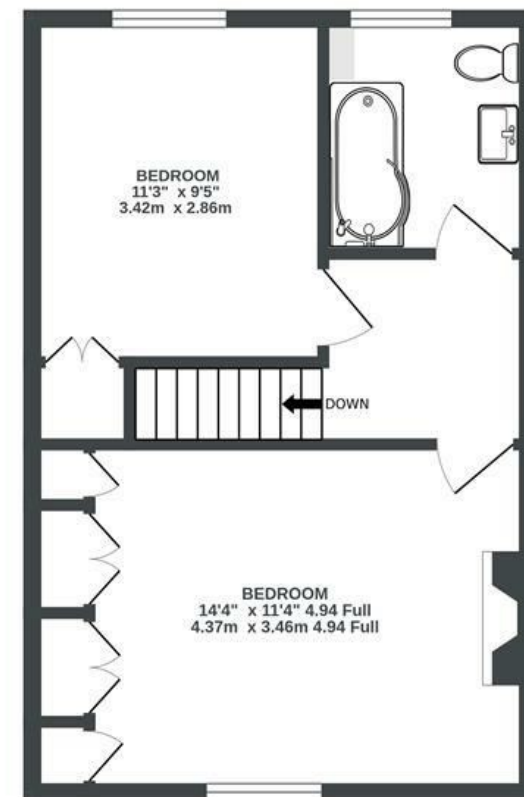
APPROXIMATE FLOOR AREA
74.6 SQM / 803 SQFT



GROUND FLOOR



1ST FLOOR



Boardwalk

Montgomery , BRISTOL



£410,000



2 Bedrooms



BS3 4SE



1 Bathrooms

"I'm leaving Montgomery Street sooner than anticipated and with some sadness because it is a wonderful place to live. I have enjoyed the easy access to parts of the town that I love and the park, always uplifting, is so beautiful at this time of year. At number 22 the new doors give a better connection to the garden and the deck is a lovely sheltered and private space to relax."

